



# **Norwich Western Link**

## **Habitat Regulations Assessment (HRA)**

### **Appendix 1: Map of National Network Sites Screened into Assessment**

Author: WSP

Document Reference: 4.03.01

Version Number: 00

Date: March 2024



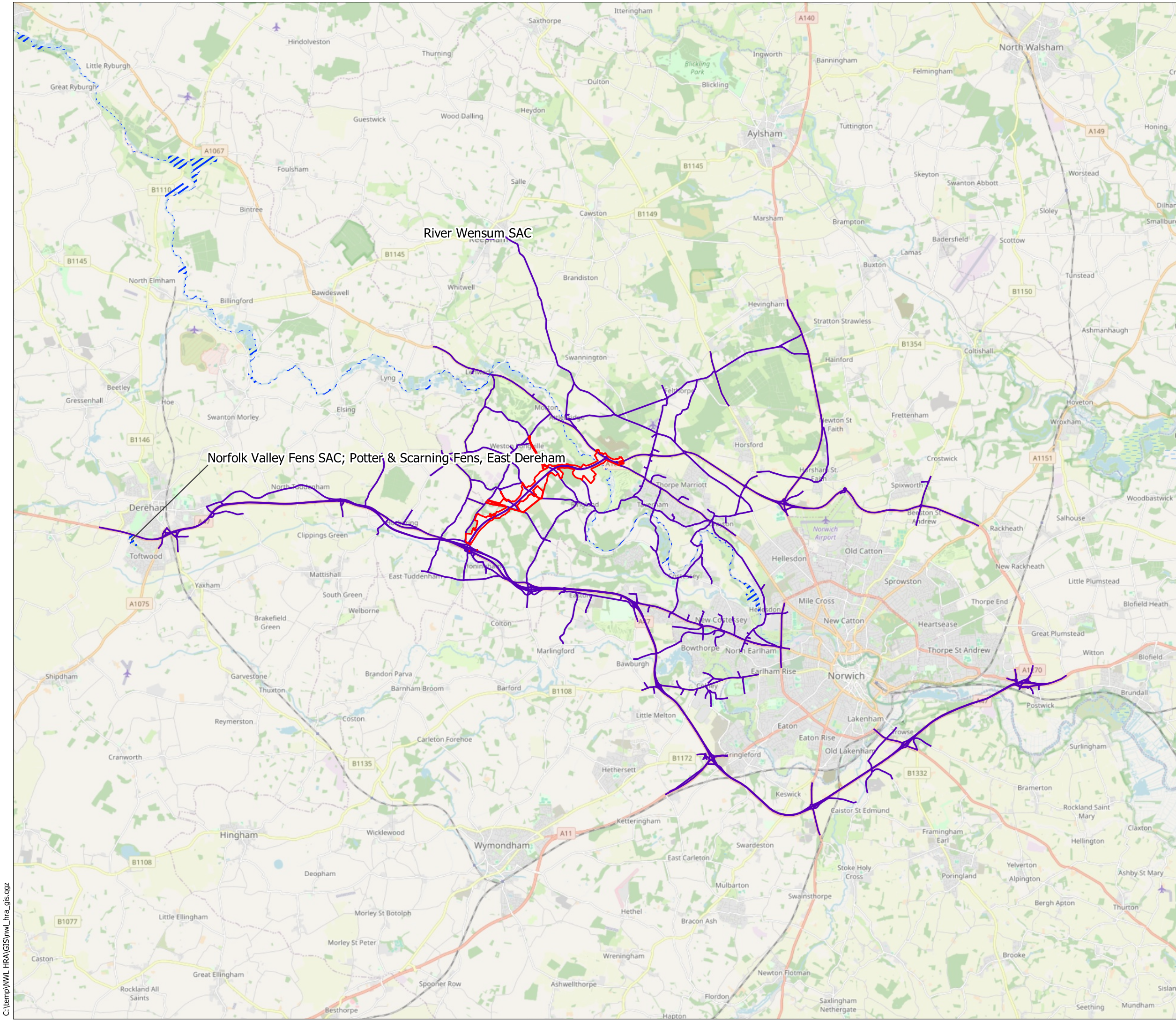
## Contents

1	Introduction .....	3
---	--------------------	---



## **1 Introduction**

- 1.1.1 This Appendix to the Habitat Regulations Assessment (HRA) is a map showing Habitat Sites screened into the HRA in relation to the NWL Boundary, and also the Affected Road Network (ARN) of the Scheme.
- 1.1.2 We have included a summary of key information shown in this document in an accessible format in section 1.1.1. However, some users may not be able to access all technical details that are included in the rest of this document. If you require this document in a more accessible format, please contact [norwichwesternlink@norfolk.gov.uk](mailto:norwichwesternlink@norfolk.gov.uk)



**LEGEND:**

- Scheme Boundary
- Affected Road Network (ARN)
- Special Area of Conservation (SAC)

STATUS:  
**FOR INFORMATION ONLY**



WSP, 6 Devonshire Square  
London, EC2M 4YE  
Tel: +44 (0) 20 7337 1700  
www.wsp.com

CLIENT:  
**Norfolk County Council**

PROJECT:  
**Norwich Western Link**

TITLE:  
**Habitats Regulations Assessment:  
Stage 1 Screening Map**

SCALE @A3: <b>1:200,000</b>	DRAWN: <b>CH</b>	APPROVED: <b>PJ</b>
VERSION: <b>1</b>	DATE: <b>25/01/24</b>	DATE: <b>25/01/24</b>
PROJECT No: <b>0095892-Y24</b>	DRAWING No: <b>Appendix A</b>	

C:\temp\NWL\_HRA\GIS\vw\l\_hra\_gis.qgz